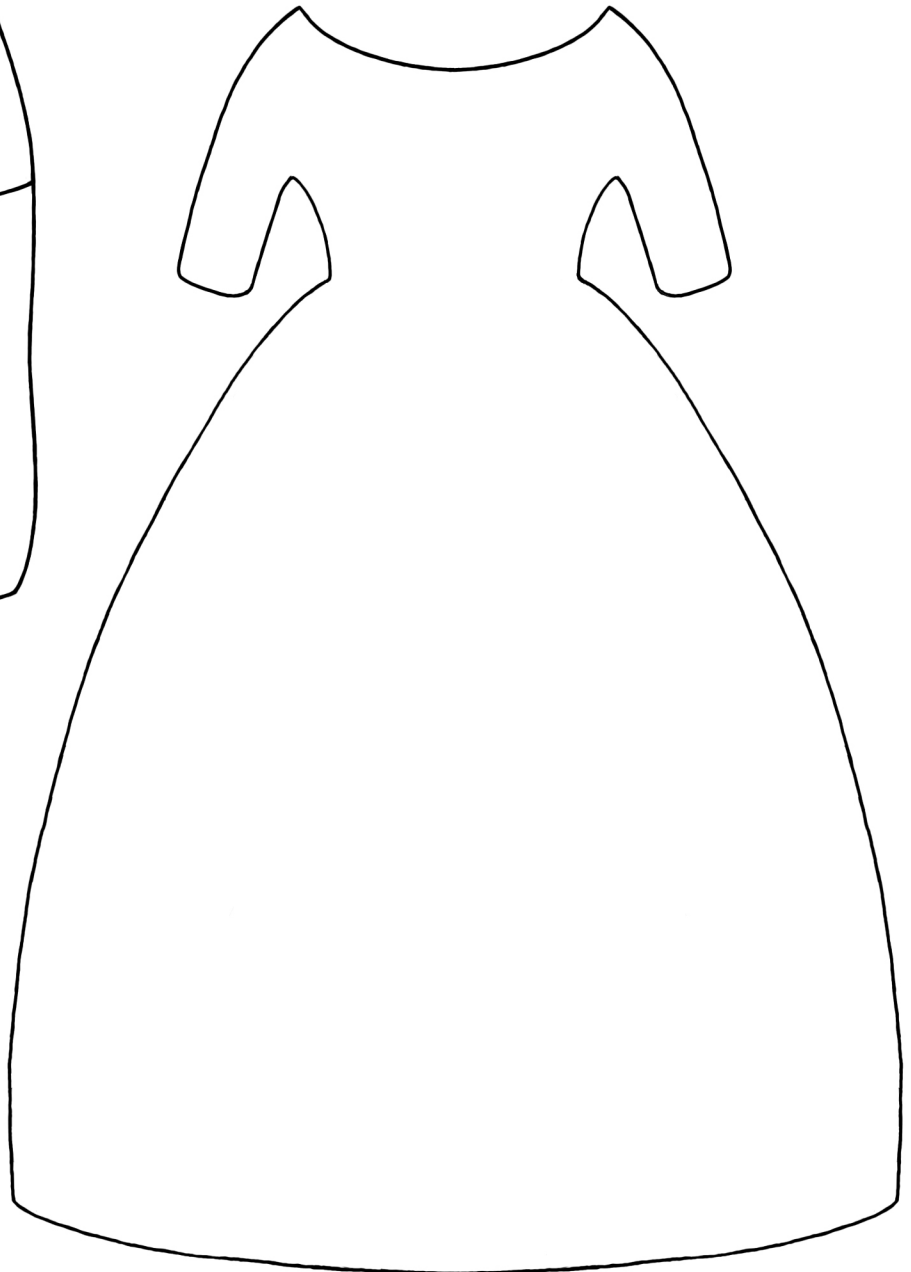
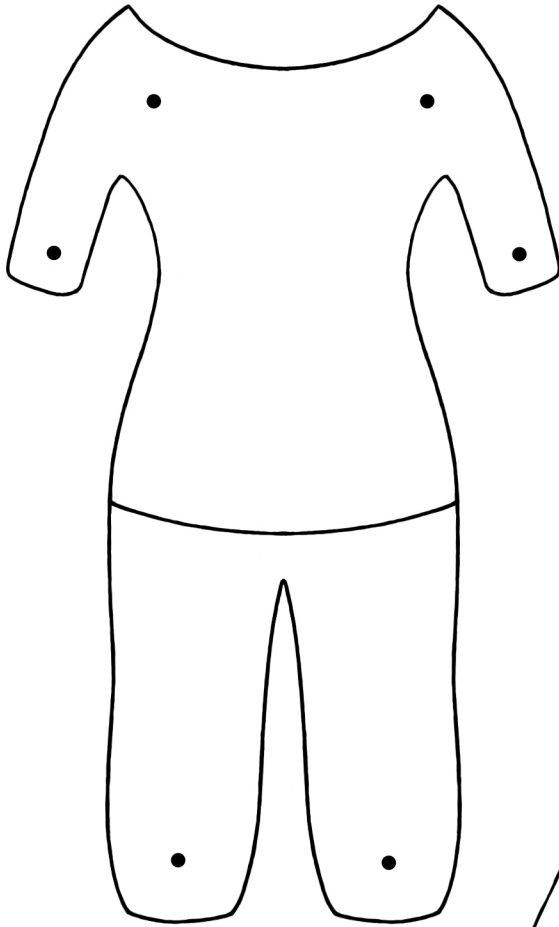


Body and Dress Template for the "Lottie" Doll Stamp

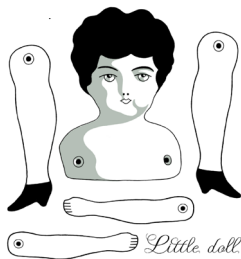
Punch holes in body and attach doll pieces from stamp set. If you are going to add a dress on top of Lottie you will want to use flat brads, or hammer them flat, otherwise the dress does not lay flat on the body of the doll.



Print dress on heavy cardstock and use as a template to trace onto patterned paper. You could also print directly onto patterned paper. It is not necessary to glue the dress to Lottie. It will stay attached if you tie a ribbon around the dress and Lottie's body at the waist. Crossing her arms in front of the dress will also help hold the dress in place. Then you can make an entire wardrobe for Lottie!



The "Lottie" stamp set is available at www.PinkPersimmon.com.



Item CS021